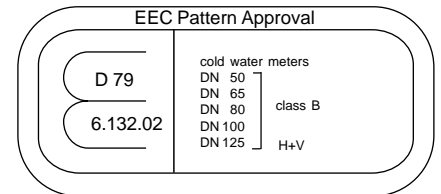
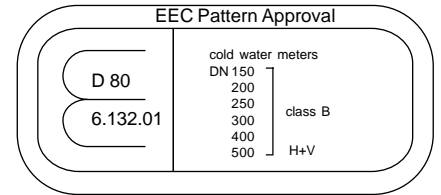


# Turbine Water Meters COSMOS WP DN 50...DN 500

for cold water up to 40 °C



## Application

- Measuring of cold water up to 40 °C (overloadable up to 50 °C)
- COSMOS WP-T for cold water in submerged pits

## Special Features

- Sealed register press water proof (IP 67)
- Sealed register may be rotated through 360°
- Up to 3 pulsers can be fitted without breaking the meter seal (only with WP)
- Maximum corrosion protection by powder coating
- No affect by external magnetic fields
- Performance data better than class B

## Installation

Pipe	horizontal	
	vertical	
	inclined	
Meter head	upwards	
	sideways	

## Installation Requirements

- Unrestricted straight pipe
  - up to DN 300: 3 x DN
  - starting with DN 400: 5 x DN
- No abrupt restrictions directly behind the meter



Reg-No. 2173-01

Certified Company according to DIN ISO 9001

Laboratory Accreditation according to DIN EN 45001  
DAR Registration No. LED-P-08.001



**MEINECKE**

ML 560 e

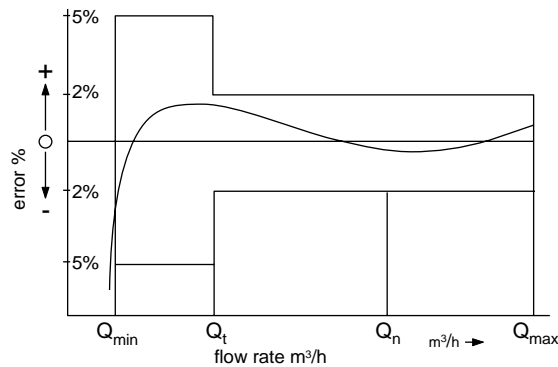
# Technical Data

## Performance Table

Size of Meter		DN	50	65	80	100	125	150	200	250	300	400	500
$Q_{max}$	maximum peak flow (few minutes)	m <sup>3</sup> /h	80	120	200	250	350	600	800	1200	2000	3000	4500
$Q_n$	continuous flow	m <sup>3</sup> /h	40	60	120	180	200	400	550	750	1000	2000	3000
$Q_t$	transitional flow $\pm 2\%$	m <sup>3</sup> /h	1.0	1.0	1.0	2.5	4.0	4.0	6.0	12	15	50	60
$Q_{min}$	minimum flow $\pm 5\%$	m <sup>3</sup> /h	0.5	0.6	0.6	1.2	2.5	2.75	4.0	6.0	12	25	45
	starting flow	m <sup>3</sup> /h	0.2	0.25	0.25	0.3	0.6	1.7	1.8	3.0	9.0	15	20

Meter sizes DN 600 and DN 800 on request

## Typical Accuracy Curve



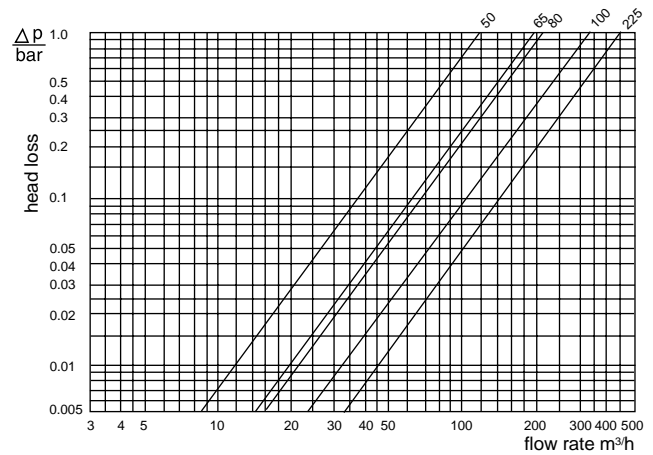
- $Q_{max}$  = maximum peak flow (few minutes)
- $Q_n$  = continuous flow
- $Q_t$  = transitional flow  $\pm 2\%$
- $Q_{min}$  = minimum flow  $\pm 5\%$

## Material

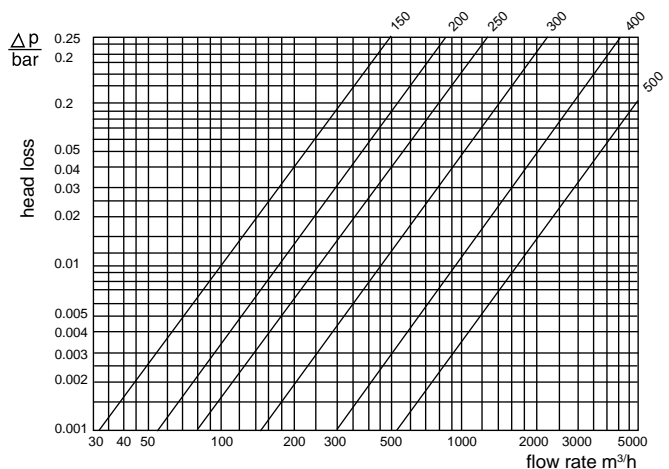
Body	PN 16	cast iron
	PN 25/40	spheroidal cast iron
Measuring element	40 °C	plastic
Rotor	40 °C	plastic
We also use materials as follows		brass*) stainless steel

\*) special design: meters up to DN 200 also available free of copper alloy

## Head Loss Curve COSMOS WP DN 50...125



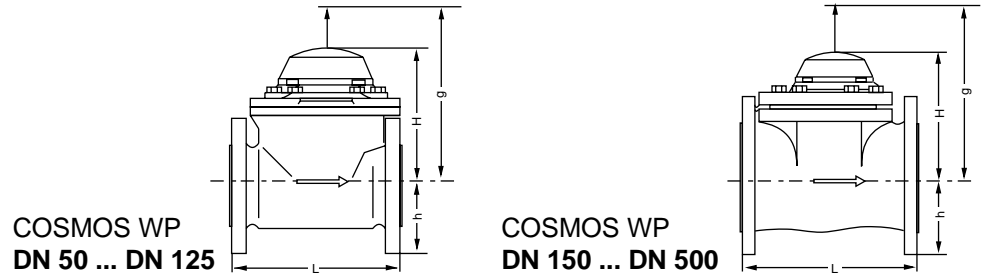
## Head Loss Curve COSMOS WP DN 150...500



## Weights

Size of meter	DN	50		65		80		100		125		150		200		250		300		400		500	
Working pressure PN bar		16	40	16	16	40	40	16	40	16	16	40	40	16	40	16	25	16	25	16	16	16	16
Meter	kg	12	15	13	15	18	17	24	22	39	43	50	57	102	118	117	154	187	187	256	256	256	256
Measuring element	kg	3	3	3	3	3	3	3	3	8	9	8	9	22	22	22	22	25	25	28	28	28	28
Body	kg	9	12	10	12	15	14	21	19	31	34	42	48	80	96	95	132	162	162	228	228	228	228

## Dimension Picture



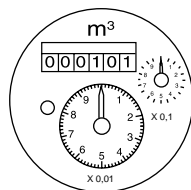
## Dimensions for WP Other overall lengths on request

Size of meter	DN	50	65	80	80	100	125	150	200	250	300	400	500
Working pressure	PN bar	16/40	16	16	16/40	16/40	16	16/40	16/40	16/25	16/25	16	16
Overall length	L mm	200	200	200	225	250	250	300	350	450	500	500	500
Height	H mm	175	175	175	175	175	175	233	233	321	321	365	412
	h mm	82	93	100	100	110	125	135	162	194	219	295	353
	g mm	360	360	360	360	360	360	470	470	680	680	770	860

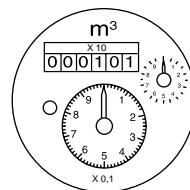
## Pulse Values for WP Other pulse values on request

pulser		DN 50 ... DN 125 1 Imp $\Delta$ ... m <sup>3</sup>	DN 150 ... DN 250 1 Imp $\Delta$ ... m <sup>3</sup>	DN 300 ... DN 500 1 Imp $\Delta$ ... m <sup>3</sup>
REED 01		1,0 m <sup>3</sup> 0,1 m <sup>3</sup>	10 m <sup>3</sup> 1,0 m <sup>3</sup>	100 m <sup>3</sup> 10 m <sup>3</sup>
OPTO 01		0,001 m <sup>3</sup>	0,010 m <sup>3</sup>	0,10 m <sup>3</sup>

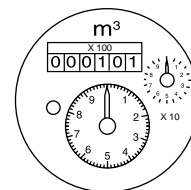
## Dials WP



DN 50 ... DN 125

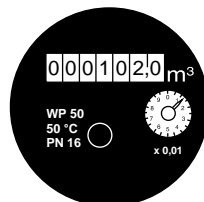


DN 150 ... DN 250

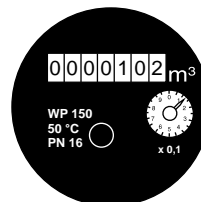


DN 300 ... DN 500

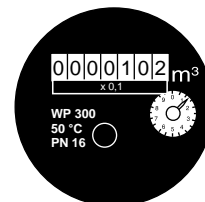
## Dials WP-T



DN 50 ... DN 125



DN 150 ... DN 250



DN 300 ... DN 500



**MEINECKE**

## Available Designs

### COSMOS WP DN 50 ... DN 125 Other overall lengths on request

Size of meter	DN	50	65	80	80	100	125
Overall length L	mm	200	200	200	225	250	250
Order no. WP	PN 16	826243	826249	828533	826392	826255	826258
	PN 25	827444	---	---	827450	827456	---
	PN 40						
Order no. WP-T	PN 16	825369	825370	---	825372	825373	825374

### COSMOS WP DN 150 ... DN 500 Other overall lengths on request

Size of meter	DN	150	200	250	300	400	500
Overall length L	mm	300	350	450	500	500	500
Order no. WP	PN 16	826485	826509	826569	826593	826653	826677
	PN 25	827462	827468	828182	828188	---	---
	PN 40			---	---		
Order no. WP-T	PN 16	825491	825495	825556	825560	825564	825568

## Order Example

	specification
	type
	size of meter
	working temperature
	working pressure
<b>COSMOS WP 50 40/16, L=200 mm</b>	overall length
<b>according to DIN 2501 PN 16</b>	flange drilling
<b>826243</b>	order no.

Subject to change without notice  
1296



**MEINECKE**

H. Meinecke AG  
Meineckestraße  
D-30880 Laatzen

Tel. (05102) 74-0  
Telefax (05102) 74-110  
<http://www.meinecke.de>  
E-mail: [service@meinecke.de](mailto:service@meinecke.de)