



■ Special Features

- Patented hydrodynamically balanced rotor
- Patented symmetrical calibration adjustment
- Hermetically sealed register (IP 68)
- Register may be rotated through 360°
- High overload capability
- Removable measuring element
- Up to 3 pulsers (1 x OD, 2 x RD) may be fitted without breaking the approval seal
- Powder coating affords max. corrosion protection

■ Application

- Measurement of high, relatively constant flow rates, e.g. behind pumps

■ Pattern Approval Sign

22.16

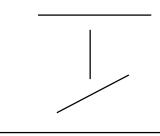
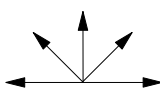
Diameter Nominal DN 50 ... 150

Class B

96.01

- Hot water meters pressure rate PN 40 please see leaflet ML 5050 e

Installation

Pipe	horizontal vertical inclined	
Meter head	upwards sideways	

Installation Requirements

- Unrestricted straight pipe in front of the meter 3 x DN
- No abrupt restrictions directly behind the meter

PerformanceTable

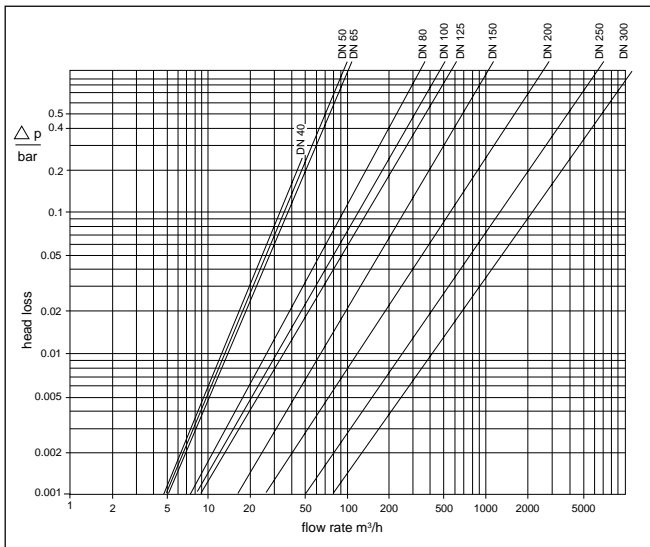
Performance data WP-Dynamic QH 130 °C

Diameter Nominal		DN	40	50	65	80	100	125	150	200	250	300
Size of meter (acc. to PTB-A22)		Q _n	10	15	25	40	60	100	150	250	400	600
Q _{max}	maximum peak flow once in life time 24 h Q _{max} or 5 min. 1.2 x Q _{max}	m ³ /h	20	30	60	90	140	200	300	500	1000	1200
Q _n	continuous flow (± 3%)	m ³ /h	10	15	25	45	70	100	150	250	500	600
Q _t	transitional flow (± 3%)	m ³ /h	1.8	1.8	2.0	3.2	4.8	8.0	12	20	45	50
Q _{min}	minimum flow (± 5%)	m ³ /h	0.6	0.6	1.0	1.4	2.0	3.5	4.5	8	20	25
	starting flow	m ³ /h	0.25	0.25	0.3	0.35	0.6	1.1	1.7	2.0	10	15

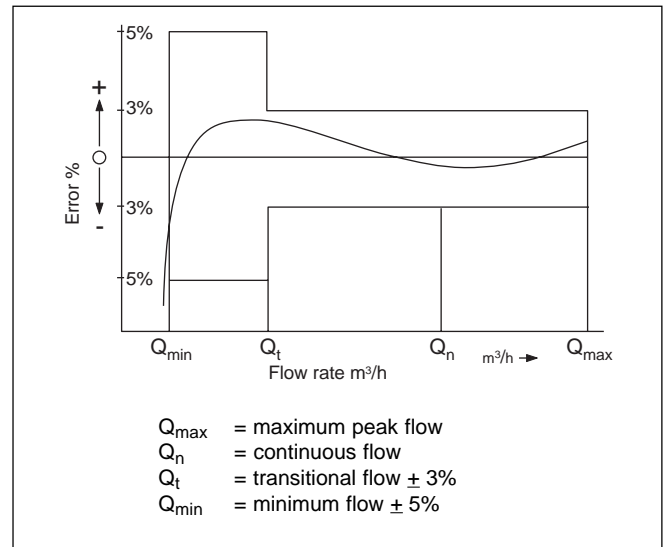
Performance data according to PTB-A22 specification class B

Diameter Nominal		DN	50	65	80	100	125	150	200	250	300
Size of meter (acc. to PTB-A22)		Q _n	15	25	40	60	100	150	250	400	600
Q _{max}	maximum peak flow short time	m ³ /h	30	50	80	120	200	300	500	800	1200
Q _n	continuous flow	m ³ /h	15	25	40	60	100	150	250	400	600
Q _t	transitional flow	m ³ /h	2.25	3.75	6.0	9.0	15.0	22.5	37.5	60	90
Q _{min}	minimum flow	m ³ /h	0.6	1.0	1.6	2.4	4.0	6.0	10.0	16.0	24.0

Typical Head Loss Curve



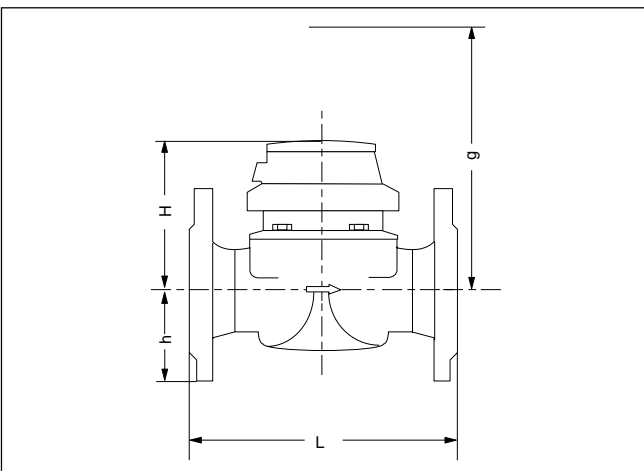
Typical Accuracy Curve



Dimensions and Weights

Diameter Nominal		DN	40	50	65	80	80	100	125	150	200	250	300
Size of meter (acc. to PTB-A22) Q_n			10	15	25	40	40	60	100	150	250	400	600
Dimensions	Overall length	L mm	220	200	200	200	225	250	250	300	350	450	500
	height	H mm	120	120	120	150	150	150	160	177	206	231	256
		h mm	69	73	85	95	95	105	118	135	162	194	226
		g mm	200	200	200	270	270	270	280	356	441	466	491
Weights	meter	kg	7.4	7.7	10.0	13.6	14.0	18.0	20.5	35.5	50.5	72.3	99.3
	measuring element	kg	1.4	1.4	1.4	3.0	3.0	3.0	3.0	5.5	7.5	7.5	7.5
	body	kg	6.0	6.3	8.6	10.6	11.0	15.0	17.5	30.0	43.0	63.8	91.8

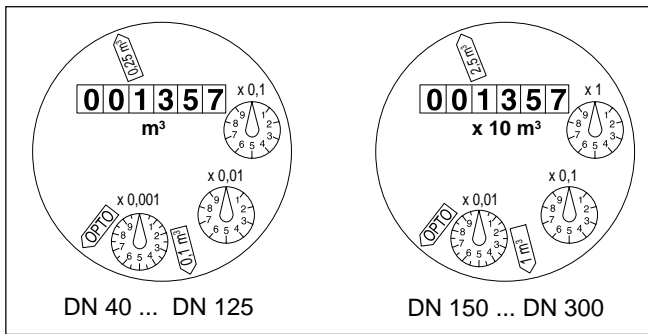
Dimension Picture



Material


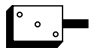
Body	PN16	cast iron
Measuring element		plastic
Rotor		plastic
We also use the following materials		brass stainless steel

Dials



Diameter Nominal DN	Smallest reading m ³	Max. reading m ³
50 ... 125	0.0005	1 000 000
150 ... 300	0.005	10 000 000

Pulse Values

Pulser		pulse value	
		DN 40 ... DN 125	DN 150 ... DN 300
RD 02		0.25 and 0.1 m ³ alternatively 0.25 and 0.025 m ³	2.5 and 1 m ³ alternatively 2.5 and 0.25 m ³
OD 02		0.001 m ³	0.01 m ³
OD 04		0.01 m ³	0.1 m ³

Available Designs

Diameter Nominal	DN	40	50	65	80	80	100
Overall length	mm	220	200	200	200	225	250
Order no.	PN 16	828594	828596	828598	828600	8286602	828604

Diameter Nominal	DN	125	150	200	250	300	
Overall length	mm	250	300	350	450	500	
Order no.	PN 16	828606	828608	828718	828720	828744	

Order Example

<p>WP-Dynamic, DN 50, 130/16, L= 200 mm, 0.25/0.1 m³ drilled according to DIN 2501 PN 16 828596</p>	<p>type diameter nominal working temperature pressure rate overall length pulse values flange drilling order no.</p>
---	---



Subject to change without notice
800101 / 01.2002

H. Meinecke AG
Meineckestrasse
D-30880 Laatzen

Tel. +49 (0)5102 / 74-0
Fax +49 (0)5102 / 74-341
<http://www.meinecke.de>
E-mail: service@meinecke.de

 **MEINECKE**
An Invensys company